

VitaCarry[®]

Advanced Pill Grinder



Care and Use Guide

Advanced Pill Grinder
Grinds pills to powder
with the push of a button.

Congratulations on the purchase of your new Advanced Pill Grinder. Please familiarize yourself with its' safe operation and features before you begin to use it. This product is for adult use only. Keep away from children.



! WARNING

To reduce the risk of injury, everyone using this tool must read and understand these instructions before operation. Never put fingers near gears while operating. Keep loose clothing, long hair, etc. away from entry.

This product is designed for grinding

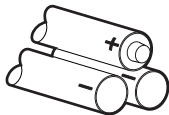
POWDER BASED PILLS & TABLETS ONLY

Before grinding ANY medications or supplements, ALWAYS

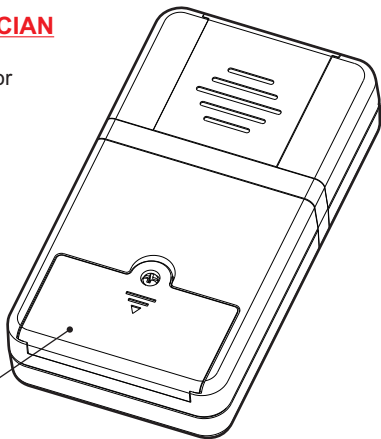
CONSULT YOUR PHYSICIAN

DO NOT USE this product for
TIME RELEASE capsules
LIQUID FILLED capsules
HARD COATED PILLS or

Easy Set Up



Install **3 AAA** batteries (not included) in battery compartment as shown.



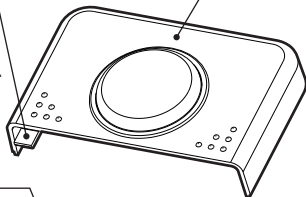
Getting to know your new Pill Grinder

Features

Safety Tab

Do not bend or break.
Unit will NOT operate w/Top Cover removed.

Top Cover
w/viewing window



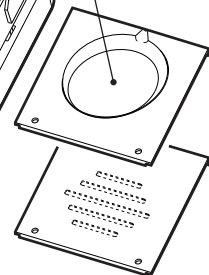
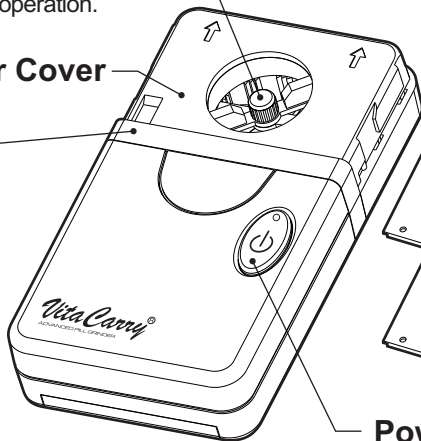
Cutting Gears

Always be sure this thumb nut is secure *before* operation.

Inner Cover

Trim Strip

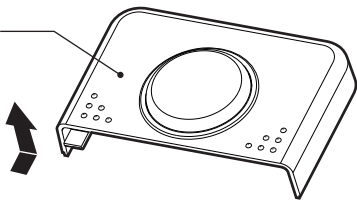
Collection Tray and Bottom Cover



Power On/Off

Remove Top Cover

by gently sliding forward and lifting.



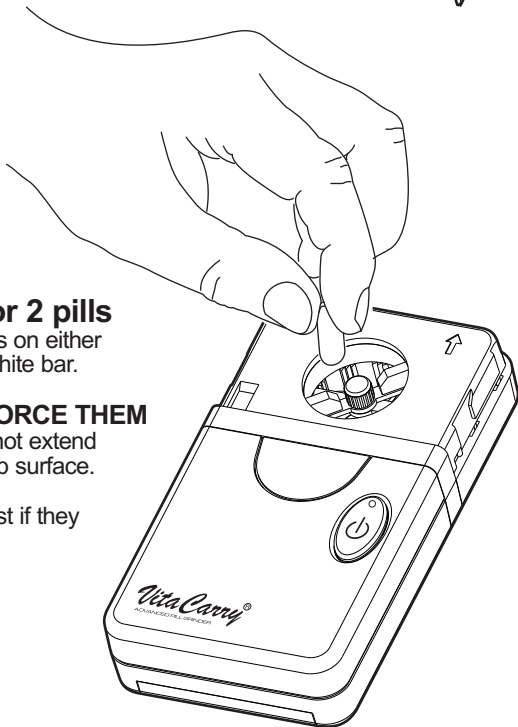
Insert 1 or 2 pills

in the cavities on either side of the white bar.

DO NOT FORCE THEM

Pills should not extend above the top surface.

Split them first if they are too big.



Replace Top Cover
by carefully aligning **Safety Tab** and sliding in place until you hear a click.

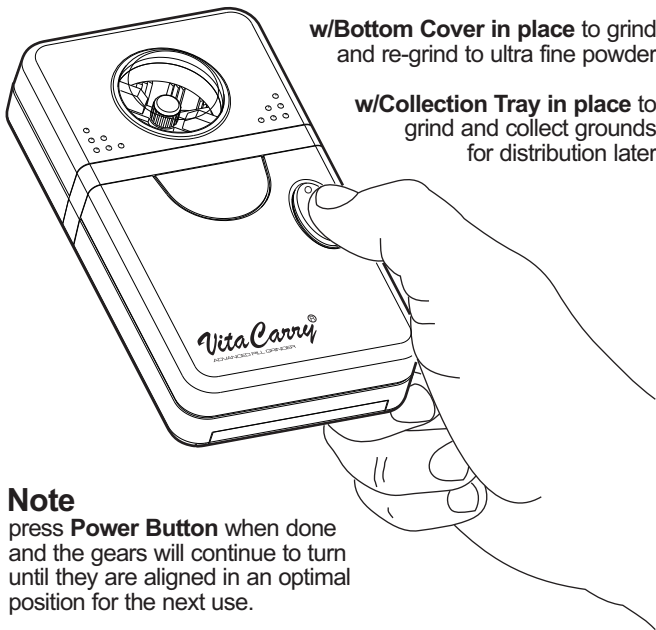
Operation

Press Power Button to Grind

w/**Bottom Cover removed** to distribute ground pills where you want them

w/**Bottom Cover in place** to grind and re-grind to ultra fine powder

w/**Collection Tray in place** to grind and collect grounds for distribution later



Note

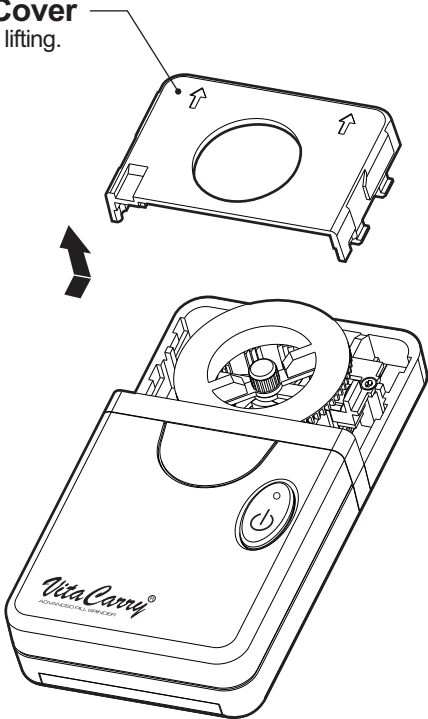
press **Power Button** when done and the gears will continue to turn until they are aligned in an optimal position for the next use.

DO NOT OPEN COVER with gears turning.

Cleaning

Remove | Replace Inner Cover

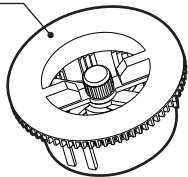
Remove Inner Cover
by sliding forward and lifting.



Remove Cutting Gears

Cleaning

Remove Cutting Gears by gently lifting w/Trim Strip removed. To replace, align carefully where keyed.

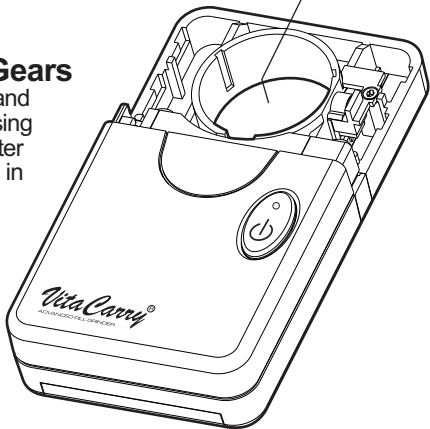


Remove Trim Strip by sliding gently forward and replace when **Cutting Gears** are cleaned and seated properly.



Clean Cutting Gears and **Collection Tray** and **Bottom Cover** by rinsing unit with soap and water or simply putting parts in the dishwasher.

Caution
it is NOT necessary to disassemble the **Cutting Gears**. Always keep thumb nut tight for operation.



eNNOVEA, LLC

2030 Dividend Drive
Columbus, OH 43228

www.ennovea.com
sales@ennovea.com

© eNNOVEA, LLC

VitaCarry® is a US registered trademark.
Designed in USA. Made in China.



Tested to comply
with FCC standards



eNNOVEA
Innovation. Together.
life

Manufacturer's Limited Warranty

eNNOVEA LLC will repair or replace any product that fails to operate as promised as a result of defective materials or assembly for a period of one year. Damages caused by misuse, negligence or accidents are not covered under this warranty. Item should be returned to eNNOVEA, LLC with proof of purchase, postage prepaid and description of problem.